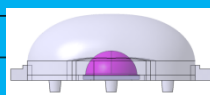
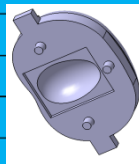
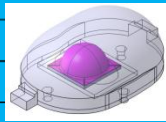


FREEFORM SECONDARY OPTICS OF LED STREETLIGHT - CHINA

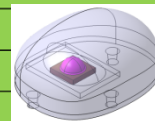
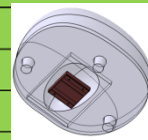
Project item No.9 specifications:

Installation Type	Single
Road width (m)	12m
# of Lanes	3
Central reserve	Null
Pole Height (m)	9~11m
Pole spacing (m)	35m
MF	0.8
Overhang (m)	0-1m
Lav (0.5-2)	0.75-1.0 nits
Eav (8-30)	10-15 lx
Emin/Eav (Uo)	0.35
UI 0.5	0.5
TI 10	10
SR	0.5
uLEDs	WB
Minimum System Output Flux	14001 lumen
LED sources	Luxeon M, Luxeon R, CREE XPE HEW, CREE XTE



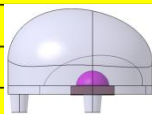
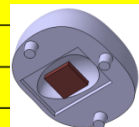
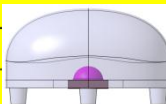
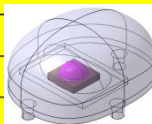
Project item No.10 specifications, compatible roadway types: No.6, No.10

Installation Type	Single
Single or Double CW	Single
Road width (m)	16m
# of Lanes	4
Central reserve	Null
Pole Height (m)	10~12m
Pole spacing (m)	40m
MF	0.8
Overhang (m)	0-1m
Lav (0.5-2)	0.75-1.0 nits
Eav (8-30)	10-15 lx
Emin/Eav (Uo)	0.35
UI 0.5	0.5
TI 10	15
SR	0.5
uLEDs	WB
Minimum System Output Flux	19900 lumen
LED sources	Luxeon R, Luxeon ES, CREE XPE HEW, CREE XTE, CREE XBD



Project item No.20 specifications:

Installation Type	Single
Single or Double CW	Single
Road width (m)	11m
# of Lanes	3
Central reserve	Null
Pole Height (m)	10~12m
Pole spacing (m)	35m
MF	0.8
Overhang (m)	0-1m
Lav (0.5-2)	1.5-2.0 nits
Eav (8-30)	20-30 lx
Emin/Eav (Uo)	0.4
UI 0.5	0.7
TI 10	10
SR	0.5
uLEDs	WB
Minimum System Output Flux	28800 lumen
LED sources	Luxeon R, CREE XPE HEW, CREE XTE



Project items No.17 specifications, compatible roadway types: No.11, No.12, No.14, No.17

Installation Type	Opposite/Stagger
Single or Double CW	Dual
Road width (m)	8m
# of Lanes	2
Central reserve	3m
Pole Height (m)	9~11m
Pole spacing (m)	35m
MF	0.8
Overhang (m)	0-1m
Lav (0.5-2)	1.5-2.0 nits
Eav (8-30)	20-30 lx
Emin/Eav (Uo)	0.4
UI 0.5	0.7
TI 10	10
SR	0.5
uLEDs	WB
Minimum System Output Flux	18800 lumen
LED sources	Luxeon M, Luxeon R, CREE XPE HEW, CREE XTE

