

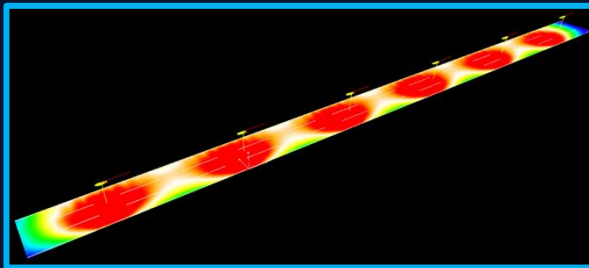
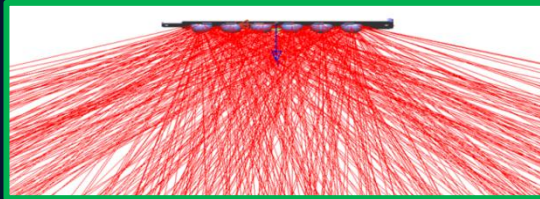
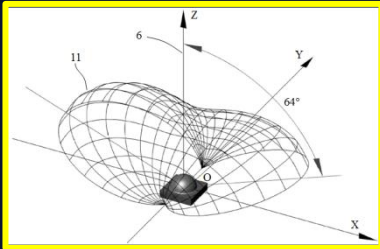
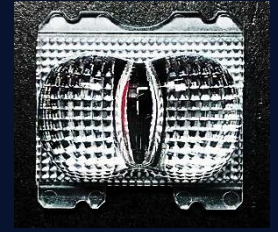
# FREEFORM SECONDARY OPTICS OF LED STREETLIGHT

## Features

- Good light uniformity
- Low TI value (low-glare)
- High optical efficiency
- High light color temperature homogenous

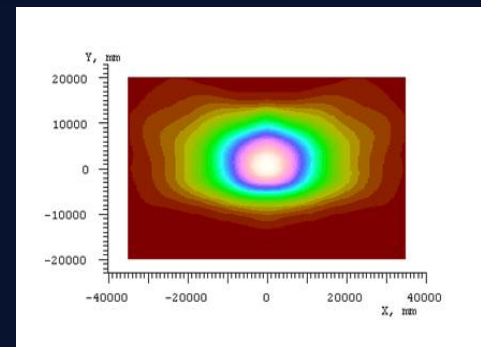
## Applications

- Road lamps and Streetlights
- Others



## Optical Performance

- Tilting axis of the beam has an angle of  $\tau$  ( $30^\circ \sim 50^\circ$  according to 3 lanes~5 lanes)
- Wide light distribution along the road way with beam angle  $2\tau$  ( $150^\circ$ ), light patterns of adjacent lamps overlapped substantially



Light pattern

## Light Sources

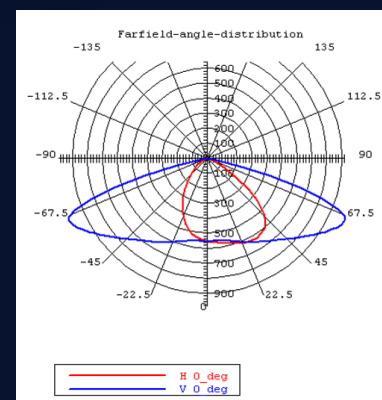
- Cree MK-R, Luxeon M, Cree XPE HEW, Luxeon R, Cree XTE

## Dimensions (Each of the single lens)

- L27mm x H9.4mm x W26mm

## Material

- Optical grade PMMA or PC



Light intensity far field angle distribution