

# LIGHT INTEGRATING SHELL MIXER

## Features

Good color mixing  
& uniform illuminance

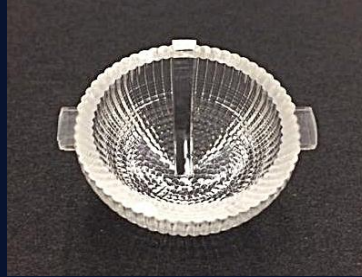
## Applications

Combined use with lenses  
or reflectors



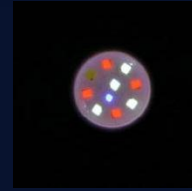
## Optical Performance

- Use together with the multicolor chip (e.g. 10 LEDs=4red+1blue+5white) and reflector, results in good color mixing and uniform illuminance
- Correct light colour separation



Shell mixer with lightguide

## Without shell mixer



Shell mixer without lightguide

## With shell mixer



## Light Source

- Multicolor LED chip

## Dimensions

- L29.70mm x H14.84mm x W31.70mm

## Material

- Optical grade PC or PMMA